



# Well Connected...

Connecting you to opportunities for well-being  
Call South Lanarkshire Infoline: 0330 3000 133  
[www.element.org.uk](http://www.element.org.uk)



## South Lanarkshire

# S

## Contents

Support Available	Page	Contact
South Lanarkshire Infoline ⓘ	2	0330 3000 133
Useful Contacts	3	
What is Well Connected?	4	
Stress Control Classes ⓘ WC	6	0300 303 0447
Living Life to the Full: Self-help & CBT 🗨 ⓘ	7	0800 328 9655
Healthy Reading ⓘ	8	All local libraries
Lifelong Learning WC	10	01698 452 501
Elament ⓘ	11	element.org.uk
Local Green Space, Walking & Outdoor Activities WC	12	
Physical Activity & Leisure WC	13	
Arts & Culture WC	14	
Benefits, Welfare & Debt Advice WC	15	0303 123 1008
Volunteering WC	16	01698 300 390
Employment Advice WC	18	0800 731 0444
Working Health Service Scotland 🗨	19	0800 019 2211
Occupational Therapy Community Clinic 🗨 ⓘ	20	
Quit Your Way – Stop Smoking Service	21	0800 84 84 84
Mindfulness	22	
Local Healthy Living Initiatives	23	
Well Connected Referral Form	25	
Healthy Reading Referral Form	26	

### KEY:

🗨 Talking Therapy ⓘ Info, self help & guidance WC Well Connected

## Useful Contacts

For further information on mental health and well-being, visit Lanarkshire's Elament website: [www.elament.org.uk](http://www.elament.org.uk)

Remember, should your problems persist or you feel you need help urgently please contact your GP. The following organisations can also prove useful in and out of hours.

### **South Lanarkshire Infoline – Freephone: 0330 3000 133**

A single number for South Lanarkshire to find out about any of the services listed here. Open Mon–Fri: 10am–2pm.

### **Breathing Space – 0800 83 85 87**

(Mon – Thu, 6pm – 2am; Fri, 6pm – Mon 6am)

[www.breathingspace.scot](http://www.breathingspace.scot)

### **Samaritans – 116 123 (24hrs)**

[www.samaritans.org](http://www.samaritans.org)



### **NHS24 – 111 (Out of hours)**

[www.nhs24.com](http://www.nhs24.com)

### **Healthy Working Lives – 0800 019 2211**

[www.healthyworkinglives.com](http://www.healthyworkinglives.com)

### **Childline – 0800 11 11 (24hrs)**

[www.childline.org.uk](http://www.childline.org.uk)

### **NHS Inform – 0800 22 44 88**

[www.nhsinform.co.uk](http://www.nhsinform.co.uk)

### **Parentline Scotland – 0808 800 22 22**

[www.children1st.org.uk/parentline](http://www.children1st.org.uk/parentline)

### **National Debt Line Scotland – 0808 808 4000**

[www.nationaldebtline.co.uk/scotland](http://www.nationaldebtline.co.uk/scotland)

### **National Domestic Abuse Helpline – 0800 027 1234**

## What is Well Connected?

Well Connected is a new programme in Lanarkshire, sometimes referred to as social prescribing or community referral. It makes it easier for us and people we know to take part in and benefit from activities and services that we know improve our well-being which means how we feel about ourselves and our lives. There are eight Well Connected areas available to us and we can benefit from more than one:

- Physical activity and leisure opportunities
- Volunteering
- Employment
- Arts and culture
- Benefits, welfare and debt advice
- Learning opportunities
- Healthy Reading and Self-help Information in Libraries
- Stress Control Classes in communities

This booklet contains information on each of the eight Well Connected areas and how to easily access the opportunities.

**Well Connected can help!!**

## Who is Well Connected for?

Well-being is about how we think and feel such as being confident, enjoying life, being able to cope with life's challenges. Many factors affect our well-being; housing, jobs, schools, relationships, where we live and money worries.

At times, we can all feel stressed, low in mood or worried. We may also have experiences that are difficult to cope with. Sometimes we don't feel good in ourselves and we don't know why.

Well Connected is for people who may be experiencing symptoms of stress and low mood, but it is also for people who want to feel better in themselves and in their life. As part of the Well Connected programme, staff working in the 8 areas have all participated in mental health and well-being awareness training.

## What are the benefits of Well Connected?

The Well Connected programmes have been shown to help people by:

- Improving self confidence and self-esteem
- Reducing low mood
- Reducing feelings of stress
- Helping people deal with some of the problems that are causing low well-being such as money worries, loneliness and unemployment
- Helping people develop positive ways of coping with the challenges of life
- Increasing opportunities for social contact
- Learning new and useful skills
- Improving community spirit
- Increasing the number of people taking part in arts, leisure, education, volunteering, sports and other activities



### What Next?

Well Connected can be the starting point to help improve our mental health and well-being. This leaflet provides information that we and people who support us can use to help us access all the opportunities that are available. If you feel that you still need some support, in addition to the Well Connected programme, please make an appointment to see your GP.

If you would like further information on the Well Connected programme or general information on mental health and well-being contact South Lanarkshire Infoline. The Infoline provides information on the support and activities available in our local area.

**South Lanarkshire Infoline – 0330 3000 133**

Email: [infoline@lamh.org.uk](mailto:infoline@lamh.org.uk)

## Stress Control Classes

Stress Control classes will help us develop skills and techniques to manage common issues caused by modern day living such as stress, anxiety or low confidence.

A yellow circle containing the text "STRESS CONTROL". "STRESS" is written in red, bold, uppercase letters, and "CONTROL" is written in purple, uppercase letters below it.

**STRESS**  
CONTROL

The classes are delivered in local community facilities and consist of six sessions lasting 90 minutes each. We will not need to speak about our issues during the class. Just sit back and listen about helpful stress control techniques\*. Feel free to bring someone along with you for support.

To find your nearest class call **0300 303 0447** or go to [www.elament.org.uk/self-help-resources/stress-control-classes/](http://www.elament.org.uk/self-help-resources/stress-control-classes/)

\* The following topics are covered on the course:

- Learning about stress
- Controlling your body
- Controlling your thoughts
- Controlling your actions
- Controlling panic and sleep problems
- Wellbeing and controlling the future

## Living Life to the Full – Online Course

Living Life to The Full is a free web-based life skills course that aims to help us tackle and respond to issues/demands which we all meet in our everyday lives. It will explore issues such as understanding why we feel the way we do, problem solving, noticing and challenging unhelpful thoughts and behaviours and anxiety control.

The skills taught cover general information we can all use in our lives when we feel under pressure, stressed or distressed. You can register for the course at [www.lltff.com](http://www.lltff.com) and complete as many or as few modules as you wish.



## Living Life to the Full – Interactive Online Course

If you feel you need additional help, the Living Life to The Full course is also available with support from self help coaches (via Action on Depression Scotland). To find out more visit [www.aod.lltffonline.co.uk](http://www.aod.lltffonline.co.uk)

## Living Life: Guided Self Help – Telephone Support

Living Life is a free telephone support service for people suffering from low mood, mild to moderate depression, symptoms of anxiety or a combination of both. Self help coaches will guide us through a range of workbooks over a series of telephone sessions (usually 4 sessions).

For more information or to make a telephone appointment, call **0800 328 9655** (Mon–Fri 1–9pm).

## Healthy Reading

The Healthy Reading Programme makes it easier to access mental health and well-being leaflets, books, CDs, DVDs and web-based support. All libraries across Lanarkshire have resources to help us get the most from life such as living life to the full, sleeping better and becoming more confident and assertive.

Healthy reading can help to overcome and cope with mental health problems such as anxiety, depression, stress, dementia and panic. There are also resources for all ages including supporting young people, adults and older people as well as items on positive parenting.



### **Who can borrow resources?**

Resources can be borrowed by anyone who lives, works or studies in Lanarkshire.

### **What if I don't have a library card?**

Library cards are free to all who live or work in Lanarkshire. To join the library all you need to do is take one source of identification with your name and address on it to your nearest library or join online at [www.sllclibrary.co.uk/cgi-bin/spyus.exe/MSGTRN/OPAC/JOIN](http://www.sllclibrary.co.uk/cgi-bin/spyus.exe/MSGTRN/OPAC/JOIN). Please note that joining online will only provide access to online library services.

### **How do I borrow the resources?**

There is no charge for any Healthy Reading material and they can be borrowed no matter your current borrower status. Your GP or other health or social care worker may suggest a particular item that may be helpful.

### **How will I find the resource in the library?**

There is a healthy reading section in all libraries. Library staff will be pleased to help you find the item you are looking for.



Please see Healthy Reading referral form on page 22.

### Home Delivery

Home Delivery is available to all South Lanarkshire residents who are temporarily or permanently confined to their home due to disability, infirmity, illness or being the carer of someone affected by these conditions. Phone 01698 452143 for more details.

### Macmillan Project

South Lanarkshire Leisure and Culture Libraries have joined forces with Macmillan Cancer Support to provide and improve cancer support services in the Lanarkshire area. This includes cancer information and support services, gentle exercise classes and volunteering opportunities. For further information phone 01698 332614.



For library enquiries phone 01698 332628 or visit <https://culturenl.co.uk/libraries/> for information on activities and events.



SOUTH LANARKSHIRE  
Leisure & Culture

### BorrowBox

With the BorrowBox service, you will be able to access both eBook and eAudiobooks directly on your device through the BorrowBox app. The app is free to download and you can sign-in using your library membership details. New titles are added every month so you will never be short of a book, even after closing time for our branch libraries. BorrowBox is accessible 24/7.

To find out more about the service, visit the eLibrary at [www.slleisureandculture.co.uk/info/57/e-books](http://www.slleisureandculture.co.uk/info/57/e-books)

## Lifelong Learning

Learning opportunities don't have to stop after school. There are many learning opportunities available in Lanarkshire. Learning new skills or attending training courses will give us an opportunity to try something new, meet new people and increase our skills. This can help us beat stress by boosting our self confidence and self-esteem and opening up new life chances.

South Lanarkshire Council's Community Learning and Home School Partnership Services has local area based teams that provide creative, engaging learning opportunities for all adults and families across South Lanarkshire.



### What do I do?

To access lifelong learning opportunities contact the Youth, Family and Community Learning Service on:  
**01698 452366**

Staff will carry out an initial guidance assessment and discuss local learning opportunities. This may include local provision and e-learning activities.

Or phone: **South Lanarkshire Infoline**, the mental health information phone line – **0330 3000 133**

## Elament

Lanarkshire's first stop for on-line mental health and well-being information providing information for people seeking assistance with mental health problems. Some of the sections covered:

- Mental health topics
- Service directory
- Self help resources
- Promoting wellbeing
- Lanarkshire Recovery Network
- News
- Training
- Spirituality
- Remember Well



## Local Green Space, Walking & Outdoor Activities

There is strong evidence to show that spending time in nature is good for the body and mind. Activities include walking, cycling, gardening, volunteering, outdoor learning and play. Lanarkshire has a range of green health opportunities on offer:



### **Greenspace Development (North)**

Tel: 01236 632 708

Web: [www.northlanarkshire.gov.uk](http://www.northlanarkshire.gov.uk) – search for Greenspace Diary

Email: [greenspace@northlan.gov.uk](mailto:greenspace@northlan.gov.uk)

Facebook: [www.facebook.com/nlccountryparks](http://www.facebook.com/nlccountryparks)

### **Countryside & Greenspace Services (South)**

Tel: 01698 426 213

Web: [www.southlanarkshire.gov.uk/info/200166/getting\\_outdoors](http://www.southlanarkshire.gov.uk/info/200166/getting_outdoors)

Email: [cag@southlanarkshire.gov.uk](mailto:cag@southlanarkshire.gov.uk)

Facebook: [www.facebook.com/CountrysideRangers](http://www.facebook.com/CountrysideRangers)

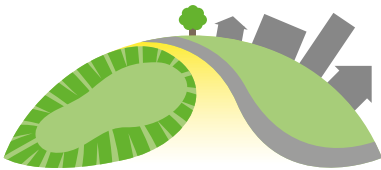
### **Get Walking Lanarkshire – 01698 402 077 / 0790 335 8424**

Email: [getwalkinglanarkshire@northlan.gov.uk](mailto:getwalkinglanarkshire@northlan.gov.uk)

Short, gentle walks across Lanarkshire led by trained volunteers.

No booking required – simply turn up with comfortable footwear.

Facebook: [www.facebook.com/getwalkinglanarkshire](http://www.facebook.com/getwalkinglanarkshire)



**Get Walking  
Lanarkshire**



**Get Outdoors  
Lanarkshire**

## Physical Activity and Leisure Opportunities

Being active is good for us. It can help by reducing our stress level, boosting our confidence and mood, help us concentrate, sleep, look and feel better. It can also help reduce our risk of heart disease, cancer, dementia and diabetes. Being active for a total of 30 minutes, 5 days a week will help our mental health and well-being.

### What do I do?

Contact your Health & Fitness Supervisor at the following centres:

- **Biggar** Sports Centre, Market Road: 01899 **221029**
- **Blantyre** Leisure Centre, Glasgow Road: 01698 **727800**
- **Carlisle** Leisure Centre, Carnwath Road: 01555 **751384**
- **Coalburn** Leisure Complex, School Road: 01555 **820848**
- **East Kilbride** Dollan Aqua Centre, Brouster Hill: 01355 **260000**
- **East Kilbride** Duncanrig Sports Centre, Winnipeg Drive:  
01355 **248922**
- **East Kilbride** John Wright Sports Centre, Calderwood Road: 01355 **237731**
- **Forth** Sports and Community Centre, Main Street: 01555 **812058**
- **Hamilton** Jock Stein Centre, Hillhouse Road: 01698 **828488**
- **Hamilton** South Lanarkshire Lifestyle – Neilslaw Road, Fairhill: 01698 **456350**
- **Hamilton** Water Palace, 35 Alameda Street: 01698 **459950**
- **Lanark** South Lanarkshire Lifestyle, Thomas Taylor Avenue: 01555 **666800**
- **Larkhall** Leisure Centre, Broomhill Road: 01698 **881742**
- **Lesmahagow** Sports Facility, Strathaven Road: 01555 **894127**
- **Rutherglen** South Lanarkshire Lifestyle – Eastfield, Glenside Drive: 0141 **642 9500**
- **Strathaven** Leisure Centre, Bowling Green Road: 01357 **522820**
- **Uddingston** Sports Centre, Old Glasgow Road: 01698 **805055**



You will have to take your Well Connected referral form (on page 21) to your appointment. The leisure staff will discuss what options are best for you, such as local fitness classes, gym, sport, outdoor or community activities.

You will receive 8 weeks of free access to sessions then have the option to join as a member (concession prices available). Please note, only one 8-week membership is available per person.

## Arts and Culture

Art and culture can play an important part in improving and supporting our mental health and well-being. Doing something that we are good at and enjoy helps us beat stress. Learning new things has been shown to be very important in helping us get the most from life. This can boost our self confidence and self-esteem and let us meet new people.



### What do I do?

To access art and cultural opportunities contact one of the booking offices on:

- **East Kilbride Arts Centre** – 01355 261000
- **The Town House Hamilton** – 01698 452299
- **Lanark Memorial Hall** – 01555 667999
- **Rutherglen Town Hall** – 0141 613 5700

A discussion will take place around what arts you are interested in and local opportunities. You can book into a South Lanarkshire Art Class or find out details of locally run voluntary art projects in your area.

## Benefits, Welfare and Debt Advice

Money worries can have a negative affect on our mental health and well-being. There are specialist services in Lanarkshire that can help us with our money worries and give us advice on benefits and debt.

### What do I do?

To access benefit, welfare and debt advice call:

**Money Matters Advice Service –  
0303 123 1008**

You will receive advice on benefit and debt related issues and if you need to speak to an adviser you will be given an appointment.



Money Matters can help you with the following:

- Benefit check to make sure you are getting all you are entitled to
- Form filling and help you through the benefit claim process
- Challenging decisions and representation at appeal tribunal
- Dealing with debt problems by explaining options available and helping you with the option you have chosen, e.g. negotiating reduced payments to creditors.

*money matters*  
Advice Service

## Volunteering

Meeting new people and getting involved in things can help us feel valued and make a difference to others too. Joining a club or volunteering can be very rewarding and learning new skills and sharing your experience with others can be very positive.

### What do I do?

If you have time to spare and would like to find out more about volunteering you can visit our website at [www.vaslan.org.uk/interestedinvolunteering](http://www.vaslan.org.uk/interestedinvolunteering) where you can also search online for opportunities.



If you would like to speak to someone about volunteering please contact:

### **Voluntary Action South Lanarkshire**

Voluntary Sector Support Centre

155 Montrose Crescent

Hamilton ML3 6LQ

Tel: 01698 300390

Email: [volunteer@vaslan.org.uk](mailto:volunteer@vaslan.org.uk)

If you need help to find a volunteering opportunity staff will try to help you find a suitable volunteering placement.

People who are new to volunteering have the opportunity to take part in a "Bridge to Volunteering" workshop where they are given advice and information on all aspects of volunteering including PVG's, rights and responsibilities and finding an opportunity.

The workshop also includes Speed networking with various voluntary organisations who offer volunteering taster sessions to the participants.



Volunteering can also help:

- Increase confidence
- Learn new skills and experiences for future work
- Try out new career paths
- Share your skills and expertise
- Meet new people and increase your social life
- Bring a 'feel good factor' by helping other people
- Provide information for CVs and references

## Employment

Meaningful & supportive employment can help improve mental health & wellbeing

### Looking for Work?

South Lanarkshire Council and partners have a range of training and employment programmes to help unemployed people into work. We offer customised training and advice on employment related issues and can direct you to agencies that will support you with money matters, health issues, housing issues, childcare etc.



### In Work Support

We also offer training to people already in work who may require up skilling support to help them progress in work, gaining a relevant qualification leading to better job prospects.

### How do I make Contact?

You will speak to someone at the Council's delivery partner Routes to Work South Ltd who will ask you a few questions about what support you may need and they will then link you with the most appropriate local support.

We have a team of experienced staff ready to help. If you are looking for work or training please call free phone number **0800 731 0444**. The types of services will depend on your circumstances and include:

- Assessed and managed by key worker to appropriate services
- One to One tailored support and advice
- Help with money matters, financial management, Debt advice
- Childcare Assistance and advice
- Assistance with managing your health condition
- Job search & Job Matching Services
- Customised training
- Work Placements and Experience
- In work Support
- Financial assistance for accessing interview expenses, etc.

## Working Health Services Scotland

Working Health Services Scotland supports people to stay in work or return to work when they develop a health condition or impairment. WHSS helps employees at Small-to-Medium-sized Enterprises (SMEs) with less than 250 employees.

Working Health Services Scotland will assist the individual to better understand and manage their health condition. This includes individuals who present with mild-to-moderate health conditions, experiencing a level of stress or anxiety that they are struggling to cope with, or for individuals who have issues with pain, etc. Interventions may include access to physiotherapy, occupational therapy, counselling and occupational health and safety support.



**Working Health  
Services Scotland**

WHSS will provide personalised and timely back-to-work support. This covers health, employability and wider social support services. Cases are managed over the telephone. Assessments will identify health issues and help clients to access the most appropriate forms of support as soon as possible.

Anyone interested in accessing the service should dial free on:  
**0800 019 2211**

## Occupational Therapy Community Clinic

Community Clinics are a mental health Occupational Therapy initiative which connects you with local services and activities that may help you to improve your mental health and well-being. Feeling good about yourself and being able to get on with your life in the way that you want are central components of well-being and will be different for each individual. Community Clinics provide you with an opportunity to discuss your individual needs and interests with an Occupational Therapist through being offered a one off appointment at a clinic in your local area. We will support you to access local services and activities that you may benefit from.

Advice also includes:

- Ways to maintain positive mental health through taking part in valued activity
- How to achieve balance within roles and routines
- How to recognise early signs of deteriorating mental health and manage them
- How to make changes to lifestyle and behaviour
- Relevant community resources and organisations that may benefit the individual, based on their own interests

Occupational Therapy Community Clinics are delivered in ten locality areas in Lanarkshire on a monthly basis and an appointment can be arranged through contacting and asking for an appointment at the Occupational Therapy Community Clinic on the following numbers:

- **Cambuslang and Rutherglen**, Eastvale Resource Centre, 130A Stonelaw Road, Rutherglen, G73 2PQ; Tel: 0141 5314117
- **East Kilbride**, Hunter Health Centre, Andrew Street, G74 1AD  
Tel: 01355 584367
- **Hamilton**, Regent House, 9 High Patrick Street, ML3 7JA  
Tel: 01698 455459
- **Lanark** Health Centre, Woodstock Road, ML11 7DH  
Tel: 01555 667159

## Quit Your Way – Stop Smoking Services

NHS Lanarkshire Stop Smoking Services are free, friendly and have helped over 17,000\* people living in Lanarkshire to quit smoking.

There is a myth that smoking helps relieve stress. However, smoking actually increases stress – toxic chemicals go into your bloodstream which increase your heart rate and blood pressure. Instead of relaxing you, smoking can increase anxiety and tension you may already be feeling.

When someone quits, then deals with stress without a cigarette, they realise they don't need them to cope. The Stop Smoking Service staff, and other clients, can help you towards this. Many ex-smokers say they have better mood, sleep pattern and motivation.

Medications can work better for non-smokers. This could mean a lower dose is required and side effects may be reduced. Remember to inform your doctor or nurse if you have stopped smoking.

If you are not ready to give up smoking, protect family and friends from the effects of second hand smoke by making your home and car smoke free.

A Stop Smoking Nurse Specialist for Mental Health is available and can be contacted through our main number.

Call **0800 84 84 84** free to find out what support you can choose from.

Get started at **[www.QuitYourWay.scot](http://www.QuitYourWay.scot)**

Text **QUIT** to **83434** for a quit pack or text **CALL** to the same number and a Quit Your Way Scotland adviser will call you back.

or

Visit: Any Lanarkshire pharmacy

Second Hand Smoke information: **[www.rightoutside.org](http://www.rightoutside.org)**



**QUIT  
YOUR  
WAY**  
with our  
support

## Mindfulness

### Free weekly mindfulness class

De-stress. Feel better. Be happier.

Join Martin Stepek, one of Scotland's foremost Mindfulness teachers, author, Sunday Herald Mindfulness columnist and co-founder of Ten for Zen to learn about Mindfulness and be inspired to a new Mindful life.

Mindfulness has been practiced around the world for thousands of years. Many have felt huge benefits to their mental and physical health and well-being, including reducing stress and anxiety and increasing happiness. There is a large, and ever growing, body of science confirming these benefits.

In these classes, Martin will give you an introduction to some simple techniques which can deliver all these benefits and more. He will guide you towards changing and improving all areas of your life with Mindfulness, with the ultimate goal of feeling happier, being more relaxed and enjoying life.

No previous experience of Mindfulness is necessary and no equipment is required. The class is open to the public and is on a drop in basis - no need to book. The class is ongoing so you are welcome to join any time which suits you and come to as many classes as you like.

Caird Building, UWS, Caird Street, Hamilton, ML3 0QA\*  
Tuesday Evenings 6.30pm to 7.30pm

\*At time of press the venue for the class is Caird Building but will move to a new campus after the summer. For details from August 2018 onwards please see [www.tenforzen.co.uk](http://www.tenforzen.co.uk)

## **Local Healthy Living Initiatives**

In addition to the Well Connected programme, local health initiatives run many health and well-being related activities and support sessions that you can access. Contact your local organisation, below, for further information.

### **Healthy n Happy Community Development Trust**

[www.healthynhappy.org.uk](http://www.healthynhappy.org.uk)

Aspire Building, 16 Farmeloan Road, Rutherglen, G73 1DL

0141 646 0123

### **Tenants Association of Coatshill and Thornhill (TACT)**

#### **Community Hall**

88 Hillview Drive, Blantyre G72 9EF; 01698 327 783

### **Getting Better Together (GBT) Shotts – [www.gbtshottshlc.org.uk](http://www.gbtshottshlc.org.uk)**

Shotts Healthy Living Centre, Kirk Road, Shotts ML7 5ET

01501 825 800

### **YMCA Bellshill and Mossend**

Main Street, Bellshill ML4 1AB; 01698 747 483

### **Orbiston Neighbourhood Centre**

Busby Road, Bellshill ML4 2BW; 01698 842 215

### **Healthy Valleys – [www.healthyvalleys.org.uk](http://www.healthyvalleys.org.uk)**

Lockhart Community Hub , Whitelees Road, Lanark, ML11 7RX;

01555 662 496

### **Clydesdale Community Initiatives – [www.cciweb.org.uk](http://www.cciweb.org.uk)**

Langloch Farm, Hyndford Road, Lanark, ML11 9TA; 01555 664 211





# Well Connected Physical Activity & Leisure Referral Form

This form needs to be completed **in full** by the agency referring.

**Name of patient / client:**

**Address of patient / client:**

**Phone number of patient / client:**

**Referring organisation:**

**Signature of referrer:**

**The information on this form is for referral purposes only & will not be stored anywhere.**

For more information about how SLLC uses your personal data, please see our Privacy Notice at:

<http://www.slleisureandculture.co.uk/privacynotice>

## Healthy Reading Referral form



This form may be used by:

**You** – to help you think about what item might be most useful to you.

OR

**The person giving out the form** – to help you find the best resource.

If you bring this with you to the library it will help the staff get the best resource for you. For a full list and brief description of resources:  
[www.elament.org.uk/self-help-resources](http://www.elament.org.uk/self-help-resources)

**If known, please state the healthy reading resource recommended:**

---

---

**Formats** (tick all that apply):

- |                                  |                                     |   |
|----------------------------------|-------------------------------------|---|
| <input type="checkbox"/> Book    | <input type="checkbox"/> CD (audio) | <input type="checkbox"/> Internet support |
| <input type="checkbox"/> Leaflet | <input type="checkbox"/> DVD        |   |

**Health topics** (tick all that apply):

- |   |  |   |
|---|--|---|
| <input type="checkbox"/> Stress/Anxiety         | <input type="checkbox"/> Making the most of life | <input type="checkbox"/> Drug misuse        |
| <input type="checkbox"/> Depression             | <input type="checkbox"/> Anger                   | <input type="checkbox"/> Panic              |
| <input type="checkbox"/> Assertiveness          | <input type="checkbox"/> Relaxation              | <input type="checkbox"/> Grief              |
| <input type="checkbox"/> Confidence/self-esteem | <input type="checkbox"/> Alcohol misuse          | <input type="checkbox"/> Eating disorder    |
| <input type="checkbox"/> Parenting (teenagers)  | <input type="checkbox"/> Parenting (toddlers)    | <input type="checkbox"/> Parenting (babies) |
| <input type="checkbox"/> Addictions             | <input type="checkbox"/> Sleep                   | <input type="checkbox"/> Abuse              |
| <input type="checkbox"/> Obsession              | <input type="checkbox"/> Worrying                |   |





Date Published: July 2018  
Version: 11

To order more Well Connected materials please contact:  
susan.mcmorrin@lanarkshire.scot.nhs.uk  
Privacy statement: [www.nhslanarkshire.org.uk/privacy](http://www.nhslanarkshire.org.uk/privacy)



Part of the Department  
for Work and Pensions

